

المها لصناعة الاشغال المعدنية للمبني ذ.م.م. **omm** AL MAHA METAL BLDG.CONST.IND.(L.L.C.)



Professional Stainless Steel Solutions



GOLD



NICKEL



CHROME



BRASS



COPPER



SILVER





PRE-QUALIFICATION DOCUMENT



AL MAHA METAL BLDG. CONST. IND. LLC

SPECIALIST IN METAL FABRICATIONS

IND. AREA 13 SHARJAH, P.O.BOX: 79681, SHARJAH, U.A.E

TEL: 06 5313800 | FAX: 06 5312225

WEB: www.almahametaluae.com

EMAIL: info@almahametaluae.com

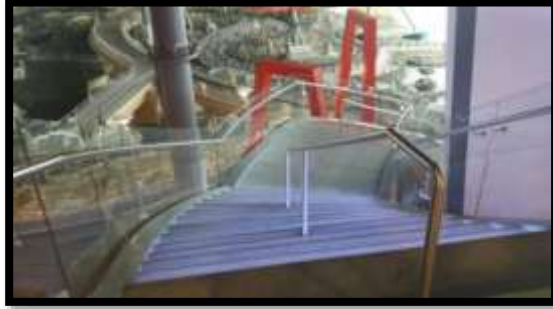


RECENTLY COMPLETED & ON-GOING PROJECTS

#	<u>CLIENTS</u>	<u>SCOPE OF WORKS</u>
1	FERRARI WORLD – ABU DHABI	Handrails & Spiral Handrails with and without Glass
2	AL BARARI VILLAS	56 Villas – Handrails with Glass and without Glass
3	DUBAI INVESTMENT PARK-J330 AHMADIA (B+G+5TYP+HC) RESIDENTIAL BUILDING	All Handrails Works
4	JUMEIRAH/PALM JUMEIRAH VILLAS: N-100, M-75, RUJA VILLA, RABIEE VILLA – UMM AL SHEIF	Shower Partitions, Claddings, Handrails & Decorative Works
5	JUMEIRAH GOLF CLUB – VILLA 65	Metal Coating Cladding & Mirror Cladding
6	THUMBAY HOSPITAL - AJMAN	Entrance Building – All Gold Mirror Cladding
7	QATAR METRO PROJECTS	Various Sizes of MS Brackets
8	AL FARDAAN JEWELLERY (DUBAI MALL)	Decorative metal works
9	AUDI	Audi innovation hub - 2019
10	WAFI ROTANA	Grand Stair case glass balustrade with top rail
11	GENERAL COMMAND OF THE ARMED FORCES	(Armed Forces Officers Club And Hotel) SS Handrails & Glass Balustrades
12	MAJID AL FUTTAIM (VOX Café - Mall Of Emirates)	Decorative fencing and cladding works
13	DAMAS JEWELLERY	<u>Decorative Metal Works</u> <ul style="list-style-type: none"> • GALLERIA MALL – ABU DHABI • MOE - DUBAI • DIFC GATE VILLAGE – DUBAI • QATAR



FERRARI WORLD - ABUDHABI



AL NAEEM MALL - RAK

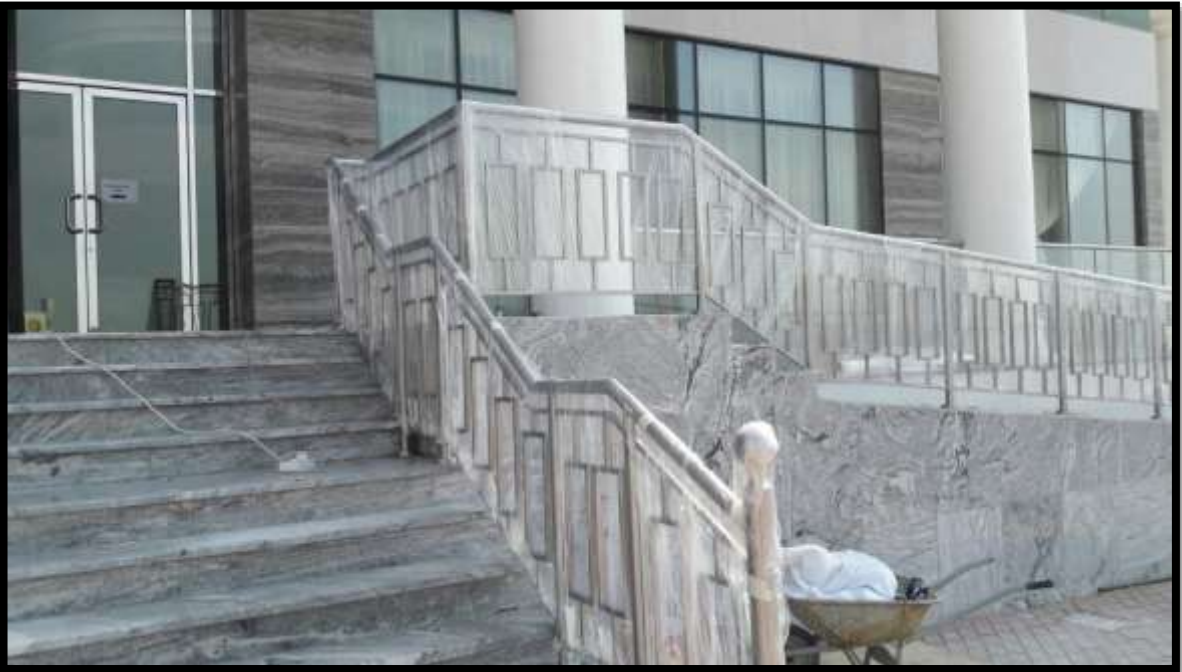


AUDI INNOVATION HUB - 2019





VILLA PROJECTS - RAILINGS





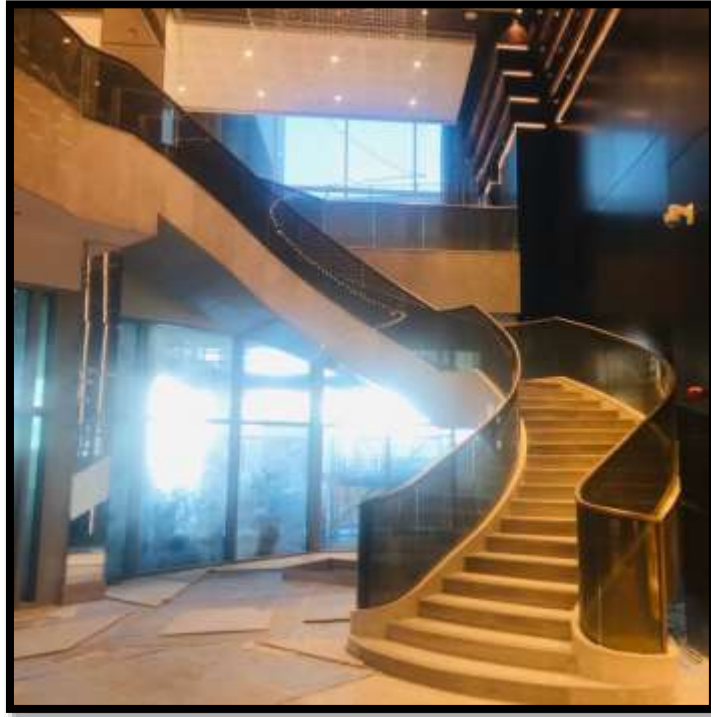
VILLA HANDRAIL



ERTH ABU DHABI (ARMED FORCES OFFICERS CLUB AND HOTEL)



WAFI ROTANA – STAIR RAILINGS



FAIRMOUNT HOTEL



SPACEWELL OFFICE





AL FARDAN JEWELLERY – DUBAI MALL



AL FARDAN JEWELLERY – DUBAI MALL



amm



amm

DAMAS







VOX CAFÉ (MALL OF EMIRATES)





DAMAS – GALLERIA- ABU DHABI







LULU GROUP INTERNATIONAL (ABU DHABI)



CAT LADDER



SPIRAL STAIRCASE



DECORATIVE FRAME



BOLLARD





OMAN- RING PAVILION



OMAN - RING PAVILION





VILLA SHOWER ROOM PARTITIONS

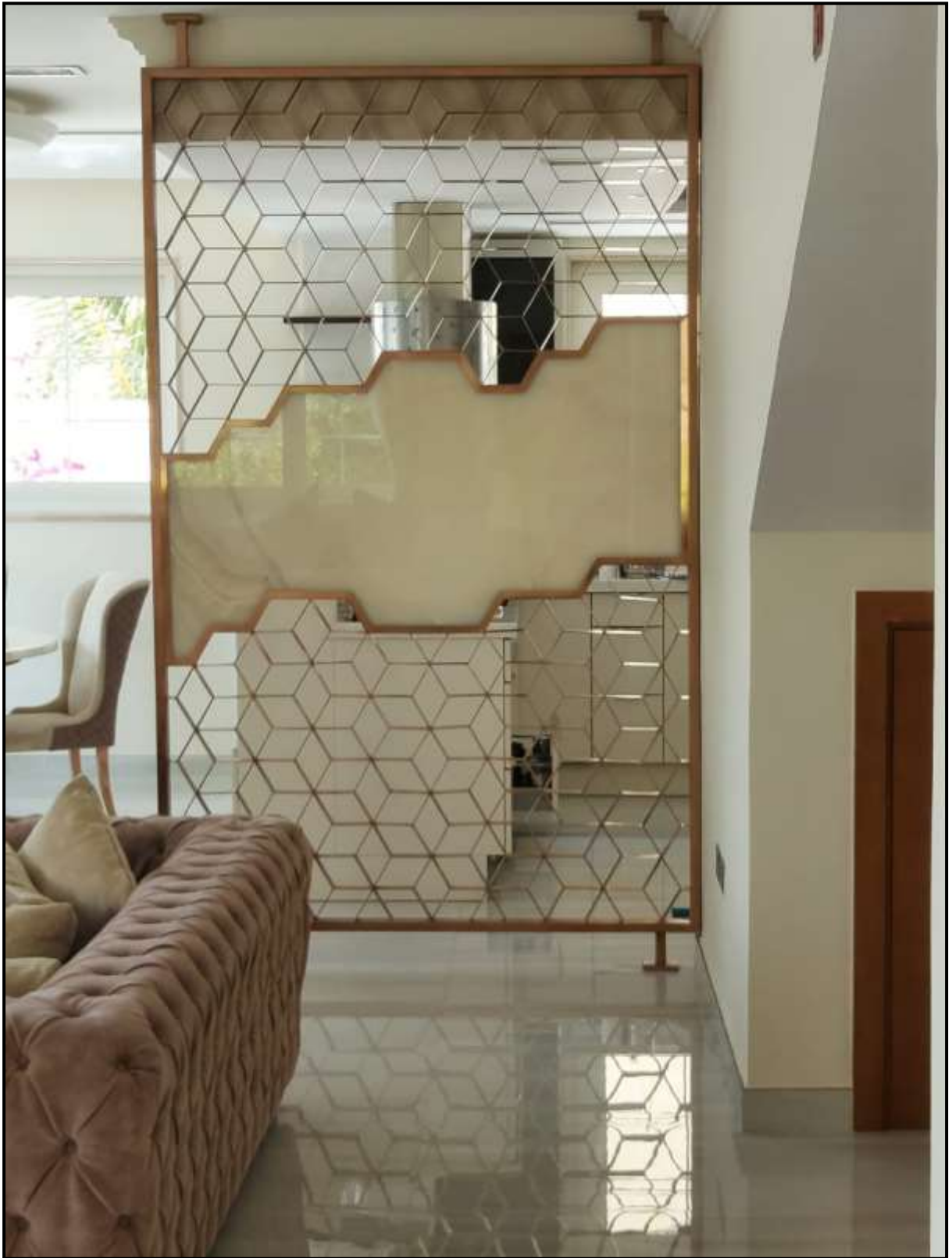


STAINLESS STEEL TABLE BASE





VILLA DECORATIVE GRILL @ PALM JUMERIAH





COMPANY PROFILE

ABOUT US

AL MAHA METAL BLDG. CONST. IND. LLC has established in UAE is proud to introduce ourselves as one of the reputed company, executing very prominent projects in and around UAE.

We are specialized in Stainless steel metal Fabrication work with technically qualified professional, well experienced in the field. Our range of activities includes design, fabrication and installation of high quality Stainless steel, Steel, Aluminium & Glass etc.

Our primary focus is to provide exceptional customer service by improving your project value with high class design and architectural solutions & process management in compliance with the standards, rules & regulations prevailing in the region.

To conclude, we are one of the most competitive metal fabrication companies in terms of technology, quality and commercials.

We would like to know if there is an opportunity to support your esteemed organization in any of our expertise fields. Please add ourselves to your list of subcontractors and invite us to participate in your future projects.

MISSION

Our primary focus is to provide exceptional customer service by improving your project value with high benefits to cost ratio. We are one of the most competitive metallic construction companies in terms of technology, quality and commercial.



OUR COMPETENCES

We at **AL MAHA METAL BLDG. CONST. IND. LLC** understand quite well that a highly professional production team is one of the most indispensable key for success as well as for customer satisfaction.

Our In-house engineering department is a group of highly professional and experienced engineers possessing wide knowledge and capable of executing any kind of projects mentioned in activates section. Due to this fact, we are able to provide you with the most efficient and economical quotations along with quality work which will be submitted to you at your maximum satisfaction level.

QUALITY ASSURANCE IN PRODUCTION

The beauty of stainless steel is enhanced by its quality and finish. We at **AL MAHA METAL BLDG. CONST. IND. LLC**. Never compromise on quality of our products. To achieve this, we assign duties. Set up suitable testing. Inspection and aim to continuously improving our production facility and product quality.

PROFICIENCY IN SALES AND CUSTOMER SERVICE

Our sales department along with its highly professional engineers will evidently provide you with the best and most economical solutions. Our quotations will be provided to you on time offering the competitive prices and including proposed details for the aim of providing you with the aid to verify your needs

PUNCTUAL AND FAST DELIVERY

Our highly efficient production team, work force and management team will assure that your product will be delivered on time without any delays as per the set dates and with maximum quality for your maximum satisfaction.



1. SCOPE OF WORK & CAPABILITIES :

Al Maha metal Bldg. Const. Ind. LLC. Office in Sharjah-UAE, perform the following functions:

- *Processing of work enquiries*
- *Estimating & Tendering*
- *Marketing & Sales*
- *Business development*
- *Client Liaison*
- *Design & Product Development*
- *Engineering, Specifications & Method Statements*
- *Project Administration*
- *Agency Representations*
- *Documentation & Project Quality Control*
- *Cost Control & Internal Audit*
- *Accounting*
- *Personnel & Public Relations*
- *Inter-company Secretarial services*

2. PRODUCTION & INSTALLATIONS :

Al Maha Metal Bldg. Const. Ind. LLC's production facilities in the Sharjah-UAE, undertake the following activities:

- Execution of Projects
- Production Quality control
- Site Measurements, Technical Meetings
- Materials Procurement
- Die and Mould Making
- Mock-ups, Samples
- Cutting, Pressing, Forming, Bending, Rolling
- Fabrication in all materials
- Machining, Turning & Milling
- Welding of all material
- Polishing
- Cladding
- Glazing
- Assembly
- Refurbishments
- Site Erection & Installations



3. METAL WORKS / PRODUCTS FROM AL MAHA METAL BLDG. CONST. IND. LLC. ARE FOLLOWING ITEMS :

- Railings : Staircases, straights, voids, compound curves, spirals, guardrails.
- Balustrades : Metal, glazed, curved, toughened, castings, wrought, tubes, bars, wire.
- Balconies : Metal, bowed, angled, cantilevered, ornate, modern, traditional.
- Fencing : Decorative, ornate, security, street, pedestrian, demountable, barriers.
- Grillers : Security, decorative, fixed, removable, sliding.
- Gates : Vehicular, pedestrian, sliding, hinged, automatic, security, decorative.
- Doors : Stainless, aluminum, security, fire-rated, glazed, panel, sliding, louvers.
- Windows : Stainless, aluminum, security, fire-rated, wire-glazed, sliding, portholes.
- Canopies : Open, metal or fabric covered, rigid, folding, car-parking, sun-shades.
- Domes : Architectural, mosque, cladding, ornamental, all shapes.
- Finials, Crescents: Cast, fabricated, gold-plated, anodized, all designs, all sizes.
- Signage, Logo : Arabic, English, stainless, brass, cast, plaques, notices, gold-plated.
- Calligraphy : Arabic, English, Holy texts, cast, fabricated, brass, gold-plated.
- Lighting : Lamp posts, trees, ornate, plain, street, pathways, exterior, interior.
- Artwork : Decorative designs, combination materials, with glass, all colors.
- Masharabia, Screens: All designs, Arabic, decorative, geometric, floral, and thematic.
- Gratings : Exterior, interior heavy & light duty, stainless steel, water, sewage.
- Cladding : Exteriors, interiors, columns, fascia's, roofing, functional, decorative.
- Marine : Boat & ship fittings, rails, cleats, tanks, ladders, hatches, binnacles.
- Reinforcement : Stainless steel bars, rods, mesh, wires, all diameters
- Bearers : Load-bearing plates, stainless steel, all grades, structural.
- Ladders : Cat, walkway, safety, cradles, gangways, fittings, stainless steel.
- Furniture : Domestic, office, garden, restaurant, swim pool, leisure, public.

4. GENERAL INFORMATIONS :

➤ **Corporate Registrations:** **AL MAHA METAL BLDG. CONST. IND. LLC** is fully registered and licensed in the United Arab Emirates with the following Governmental Authority:

- | | | |
|-------------------------|-------------------|---------|
| • Sharjah Municipality: | Registration No. | 163360 |
| | Trade License No. | 733037 |
| • Dubai Municipality: | Registration No. | 1307942 |
| | Trade License No. | 791082 |

➤ **Financial, (a) Banks:** Above companies maintains accounts at the following Banks.

- Emirates Islamic Bank – Sharjah
- Auditors: Cloudberry Auditors and Accountants

➤ **Ownership:** The **Al Maha Metal Bldg. Const. Ind. LLC.** group of companies is privately owned and managed by **Mr. Karthikeyan & Manoharan**



5 **COMPANY MANAGEMENT & PERSONNEL**

➤ **Production**

Specialist Production staffs are employed by **Al Maha Metal Bldg. Const. Ind. LLC**, totaling approximately 30 – 35 persons at any one time, in the following categories:

- Technical Manager
- Estimators
- Production Manager
- Engineers
- Procurement officer
- Production Supervisors
- Production Foremen
- Quality Controllers
- Welders, certified, all metals
- Fabricators
- Turners & Lathe operators
- Skilled metal workers
- Polishers
- Assemblers
- Installers, Erectors
- Material Storekeeper
- Support Personnel, drivers, laborers, cleaners, security etc.

➤ **Administration:**

The following categories of Administrative staff are employed to provide the necessary administrative support to the Technical and Production activities of all companies:

- Managing Director
- Manager Administration
- Marketing / Sales personnel
- Financial Controller
- Accountant
- Secretary
- Human Resources Executive
- Public Relations Executive

6 PLANT & EQUIPMENTS

A full range of general and specialized plant, equipment and tools are available and are utilized in the factory for manufacturing several different materials / products. The machinery and equipment at our factory are, as enlisted.

- Shearing Machine
- Sheet Bending /Folding Machine
- Sheet Rolling Machine
- Pipe Rolling Machine
- Vertical Drilling Machine
- Gas Cutting Machine
- Arc Welding Machine
- Polishing Machine
- Band Saw Machine
- Lathe Machine
- Power saws and metal power-cutting guillotine systems.
- Power presses, stamping machines
- Turning and milling machines,
- Lathe Machine
- Power drills
- Plasma welding machines
- Tig welding machines
- Grinding machines
- Flat-bed, band and rotary polishing machines





7. REGISTRATION & TRADE LICENSE:

Sharjah Branch: **AL MAHA METAL BLDG.CONST. IND. LLC.**

GOVERNMENT OF SHARJAH
Economic Development Department



حُكُومَةُ الشَّارِجَةِ
دائرة التنمية الاقتصادية

رخصة صناعية
Industrial License



دليل الشارقة الصناعي
Sharjah Industrial Guide



License Details تفاصيل الرخصة

Issue Date	2015/04/28	تاريخ الإصدار	License No.	733037	رقم الرخصة
Expiry Date	2023/04/28	تاريخ الإنتهاء	Registration No.	163360	رقم السجل
Trade Name	AL MAHA METAL BLDG.CONST.IND L.L.C		المها لصناعة الأشغال المعدنية للمباني ل.م.م		الاسم التجاري
Legal status	Limited Liability Company		شركة ذات مسؤولية محدودة		الشكل القانوني

License Members أطراف الرخصة

الحصص	الصفة	رقم الهوية / الجواز	الجنسية	إسم المستثمر	رقم المستثمر
Shares	Type	ID/Passport No.	Nationality	Investor Name	Investor No.
%51	شريك	784197761908322	الإمارات	حسن يوسف رمضان علي الجسسي	4745902
%26	شريك	784194894298150	الهند	كارتيكين فيلانثياثيل نارايانان	4766930
%23	شريك	784196583629595	الهند	ماوهاران كوتنوريل كوماران	4766931

المدير: كارتيكين فيلانثياثيل نارايانانكارونما كونجو. ماوهاران كوتنوريل كوماران
أنشطة الرخصة: صناعة الأشغال المعدنية للمباني
العنوان: الشارقة-صناعية رقم 13/الشارقة-شارع المدينة الجامعية-شيرة رقم 1 ملك ساسي طبرار شيخ السقاف

رقم الهاتف المتحرك: 0564551109
صندوق البريد: 79681 الشارقة
البريد الإلكتروني: yae@gmail.com
الموقع الإلكتروني: yae@gmail.com



تاريخ الطباعة: 2022/04/26
رقم المستخدم: 63628

- This document is official. It doesn't need to be stamped or signed.
To view license details please visit SEDD web site: www.sedd.ae
- Distribution of flyers is strictly prohibited in public and residential areas.
Distribution is allowed through.

- هذه الوثيقة رسمية ولا تحتاج لخط أو توقيع.
لتفحص من نسخة الترخيص يرجى زيارة موقع الوزارة: www.sedd.ae
- يتلصق مطلقاً بتوزيع الاعلانات في الأماكن العامة والأحياء السكنية. التوزيع فقط عن طريق الصحف المجلات
ووسائل البريد.

Dubai Branch: **AL MAHA BUILDING METAL PRODUCTS LLC**

رخصة تجارية
Commercial License

تفاصيل الرخصة / License Details

License No.	791082	رقم الرخصة
Company Name	AL MAHA BUILDING METAL PRODUCTS L.L.C	اسم الشركة
Trade Name	AL MAHA BUILDING METAL PRODUCTS L.L.C	الإسم التجاري
Legal Type	Limited Liability Company(LLC)	النسب القانوني
Expiry Date	07/10/2022	تاريخ الإنتهاء
D&B D-U-N-S ®	0	الرقم العالمي
Register No.	1307942	رقم السجل التجاري
Issue Date	08/10/2017	تاريخ الإصدار
Main License No.	791082	رقم الرخصة الأم
DCCI No.	294913	عضوية الغرفة

الإطراف / License Members

Share / الحصص	Role / الصفة	Nationality / الجنسية	Name / الإسم	No./رقم الشخص
	Manager / مدير	India / الهند	KARTHIKEYAN VILANILATHIL NARAYANAN CARUTHA KUNJU NARAYANAN	685433

نشاط الرخصة التجارية / License Activities

Building Metal Products Trading

تجارة الأشغال المعدنية للتبني

العنوان / Address

Phone No	تليفون	P.O. Box	صندوق بريد
Fax No	فكس	Parcel ID	رقم القطعة
Mobile No	هاتف متحرك		ملك اساميل عبدالله محمد بوحميد التميمي - هور العنز شرق M16 مكتب رقم

البريد الإلكتروني / Email

الملاحظات / Remarks

Print Date 14/06/2022 15:11 تاريخ الطباعة Receipt No. 14093311 رقم الإيصال



يمكنك الآن تجديد رخصتك التجارية من خلال الرسائل القصيرة. أرسل رقم الرخصة إلى 6969 (بوالصالات) للحصول على إن التعم.
Now you can renew your trade license by sending a text message (SMS): Send your trade license number to 6969 (Du/ Etsalat) to receive payment voucher.

Get FREE access to Zoho One for the first year
احصل على زوهو ون مجاناً لمدة الأولى
Zoho.com/idet



وثيقة إلكترونية معتمدة وصادرة بدون توقيع من دائرة الإقتصاد والسياحة في دبي. يُرجى مراجعة صحة البيانات الواردة في الرخصة يرجى مسح رمز الاستجابة السريعة this is a certified e-document issued without signature by the department of Economy and Tourism. Kindly Scan the QR Code to Verify the certificate



Thank you for considering AL MAHA METAL.
We look forward to working with you.

**For further communication,
Please contact us on,**

Phone : +971 6 5313800
Fax : +971 6 5312225
Address : P. O. Box - 79681
Industrial Area 13
Sharjah - UAE
E-mail : info@almahametaluae.com
Website : www.almahametaluae.com